

QUICK INSTALLATION GUIDE



Manuel d'installation rapide | Guía de instalación rápida | Schnellinstallationsanleitung

Black Jack[®]

READ AND SAVE THESE INSTRUCTIONS

LIRE ET CONSERVER CES INSTRUCTIONS
LEA Y CONSERVE ESTAS INSTRUCCIONES
LESEN UND SPEICHERN SIE DIESE ANWEISUNGEN



Operating Instructions and Maintenance:

Instructions d'utilisation et entretien :

Instrucciones de operación y mantenimiento:

Bedienungsanleitung und Wartung:

bigassfans.com/support



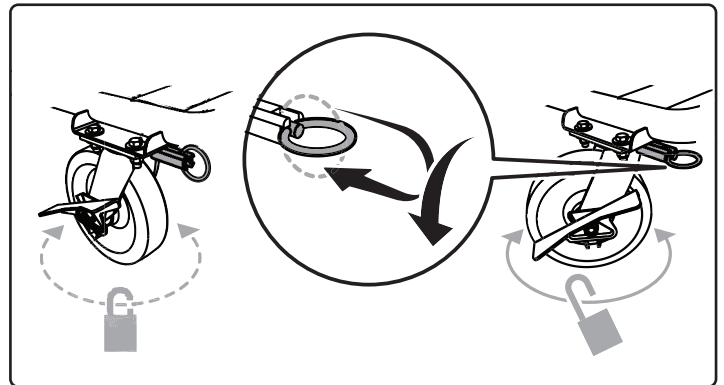
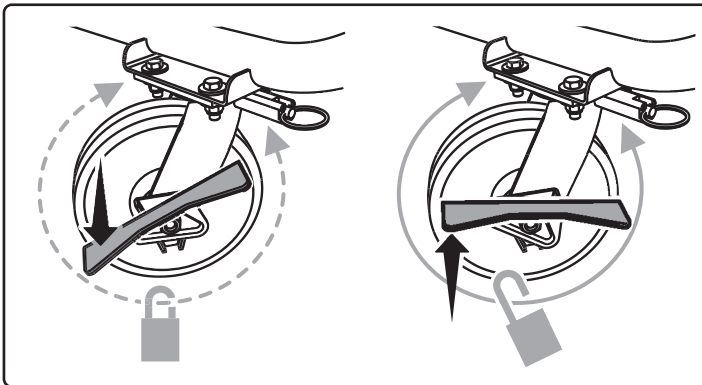
110–125 V \ominus , 50/60 Hz, 1 Φ , 15 A

200–240 V \ominus , 50/60 Hz, 1 Φ , 10 A

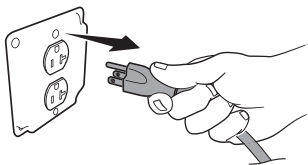
78 in. x 84 in. x 29 in. (981 mm x 2134 mm x 737 mm)

310 lb (141 kg)

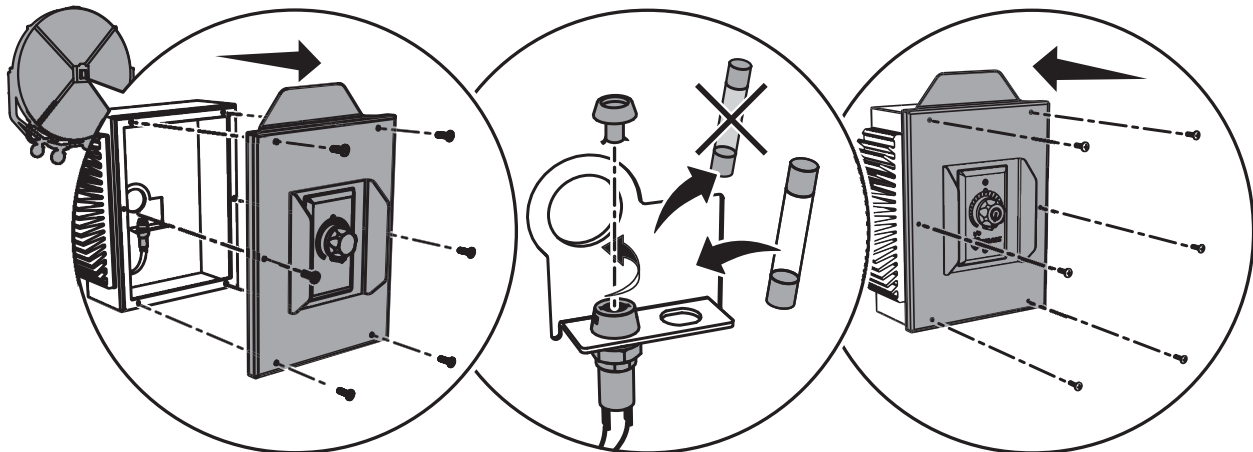
BRAKING & LOCKING *FREINAGE ET BLOCAGE* | *FRENADO Y BLOQUEO* | *BREMSEN UND SPERREN*

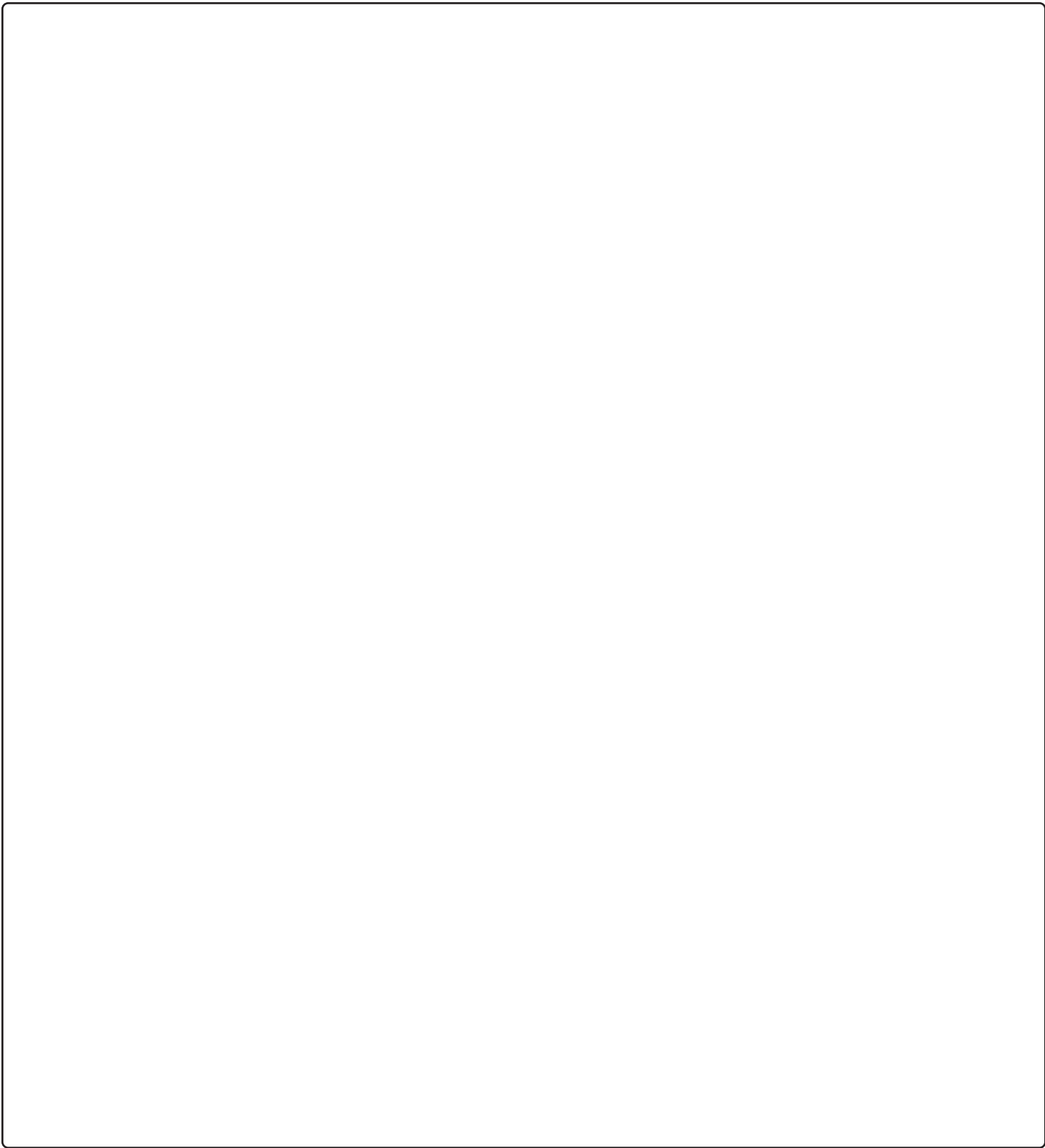


REPLACING FUSES *REEMPLACEMENT DES FUSIBLES* | *CAMBIO DE FUSIBLES* | *AUSWECHSELN VON SICHERUNGEN*



Suitable replacements
Rechange appropriés | *Repuesto adecuados* | *Passende Ersatzteile*
Bussman S505 Series, Littelfuse 215 Series, Mersen Fuse GSF, Bel Fuse 5HT





EPA Est. 97457-KY-1



Conforms to UL 507: Electric Fans
Certified to CSA C22.2 No. 113: Fans & Ventilators

WARNING: Use only on GFCI protected receptacles.

AVERTISSEMENT : Cet appareil doit être uniquement branché à des prises protégées par un GFCI.

ADVERTENCIA: Utilizar solamente en un tomacorriente protegido mediante un interruptor diferencial.

WARNUNG: Nur an GFCI-geschützten Steckdosen verwenden.

